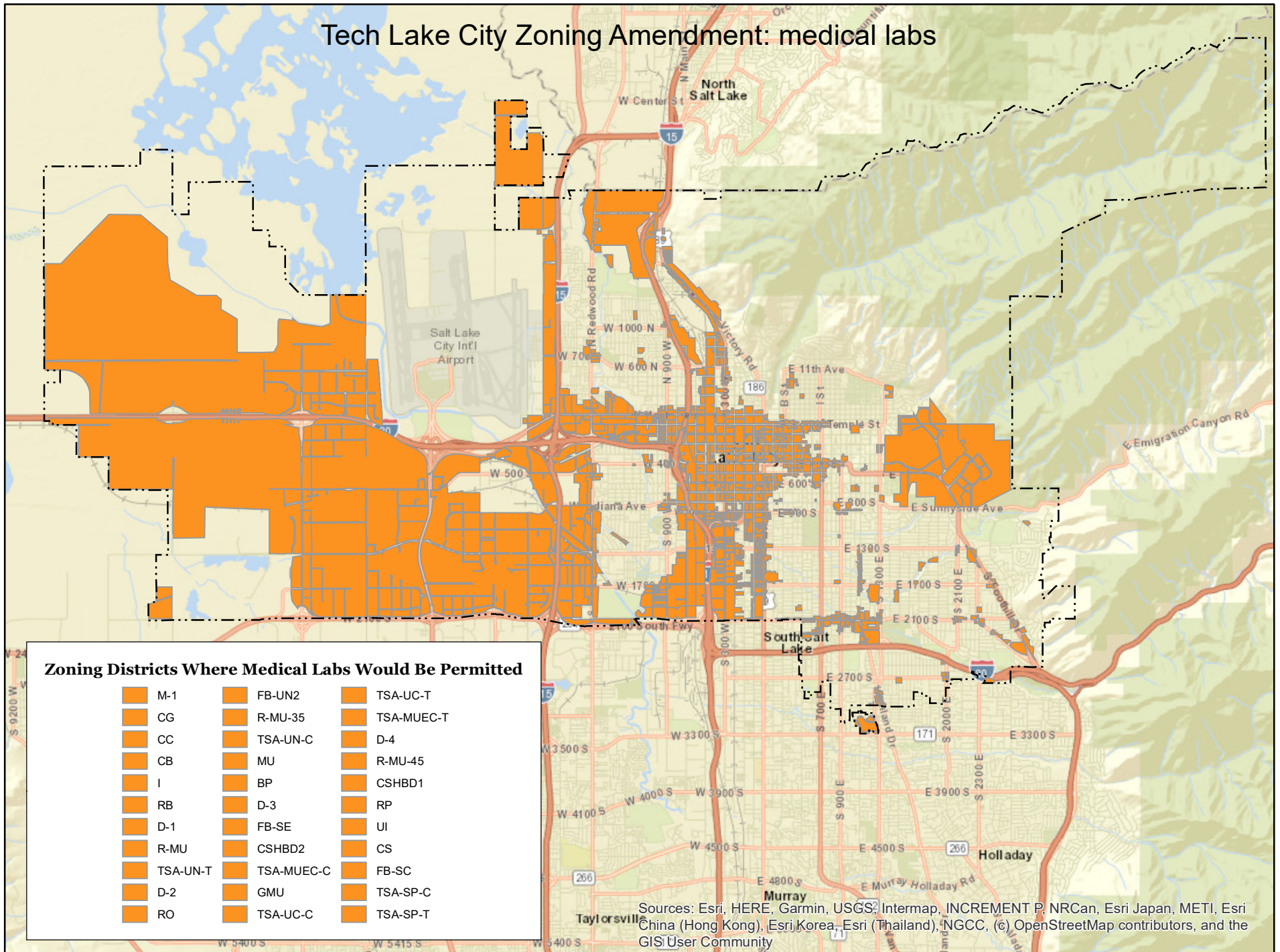


# Tech Lake City Zoning Amendment: medical labs



## Zoning Districts Where Medical Labs Would Be Permitted

- |            |              |              |
|------------|--------------|--------------|
| ■ M-1      | ■ FB-UN2     | ■ TSA-UC-T   |
| ■ CG       | ■ R-MU-35    | ■ TSA-MUEC-T |
| ■ CC       | ■ TSA-UN-C   | ■ D-4        |
| ■ CB       | ■ MU         | ■ R-MU-45    |
| ■ I        | ■ BP         | ■ CSHBD1     |
| ■ RB       | ■ D-3        | ■ RP         |
| ■ D-1      | ■ FB-SE      | ■ UI         |
| ■ R-MU     | ■ CSHBD2     | ■ CS         |
| ■ TSA-UN-T | ■ TSA-MUEC-C | ■ FB-SC      |
| ■ D-2      | ■ GMU        | ■ TSA-SP-C   |
| ■ RO       | ■ TSA-UC-C   | ■ TSA-SP-T   |

Sources: Esri, HERE, Garmin, USGS, Intermap, INCREMENT P, NRCan, Esri Japan, METI, Esri China (Hong Kong), Esri Korea, Esri (Thailand), NGCC, (c) OpenStreetMap contributors, and the GIS User Community